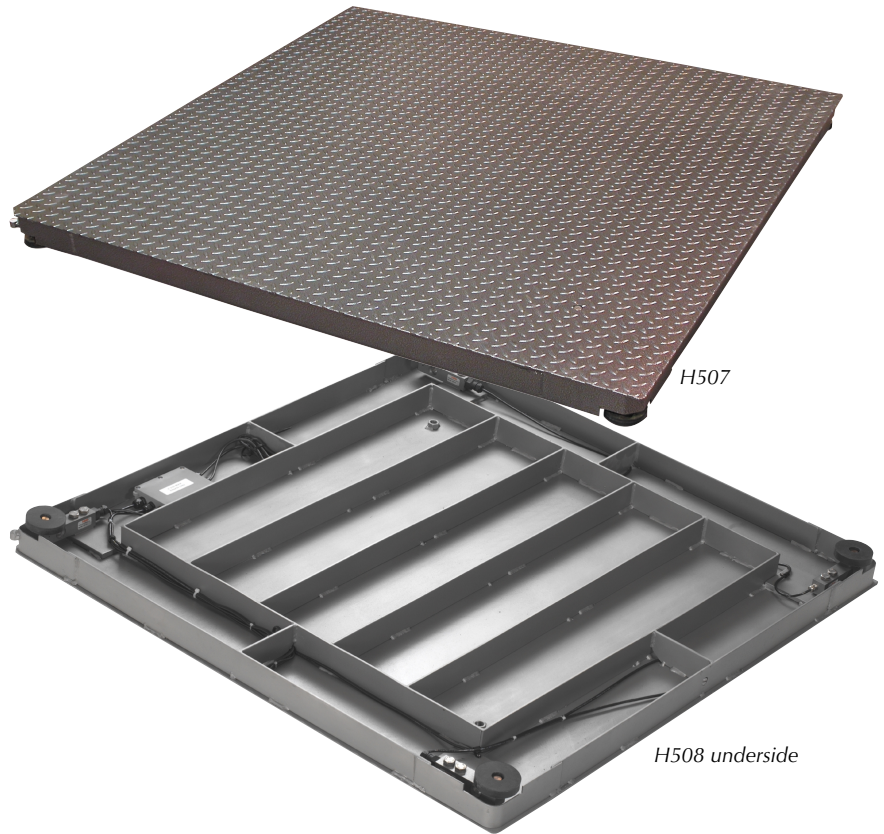


H507/H508

low profile platform scales

Maximum strength for minimum investment

- ◆ **H507 - mild steel construction**
- ◆ **H508 - stainless steel construction**
- ◆ **Capacities up to 3000 kg**
- ◆ **Suitable for surface or pit-mounting**
- ◆ **Stainless steel load cells sealed to IP67**
- ◆ **Low profile design with optional ramps for easier access**
- ◆ **EU trade approved**
- ◆ **Backed by professional service network**



Wherever and whatever you need to weigh, the H507 and H508 offer an affordable, reliable solution. With a choice of six standard sizes, a range of capacities and either mild or stainless steel finish, these low profile scales can be matched to suit your application - perfectly.

◆ **Increased durability**

The H507's robust, mild steel construction, with hard wearing powder coat finish, is well suited to heavy industrial environments and can easily withstand everyday wear and tear.

◆ **Easier cleaning**

The H508 is manufactured in stainless steel, making it ideal for hygiene critical applications in food and chemical environments. An open-framework design ensures that dirt cannot get trapped inside the base, for safe and efficient operation.

Avery Weigh-Tronix

Low on cost, high on performance

◆ Improved productivity

A low profile design suits either pit or surface mounted applications and, with the optional ramps, allows easy access for pallet trucks and hand carts. The free-standing platform is easily moved and can be placed in the most effective traffic flow for faster loading from any direction.

◆ Safety as standard

The chequer plate finish provides the added benefit of a non-slip surface to protect your staff as items are loaded. Each foot also has a non-slip base to ensure that the scale does not shift whilst in use.

Additional Features:

◆ Take control

Both models can interface with all Avery Weigh-Tronix and a range of other manufacturers' indicators for data capture and management information.

◆ Shear Success

The scale design incorporates stainless steel, shear beam analogue load cells, purpose-designed for high capacity weighing applications. Each cell carries the OIML R60 seal of approval.

◆ Clear Winner

The load cells are hoseproof to IP67, to provide corrosion resistance during frequent washdown routines.

◆ Level Headed

A fitted spirit level ensures that the scale is completely stable, to provide accurate and reliable results on uneven or rough factory floors.

Platform Sizes, Capacities & Division Size

Maximum Strength 600 kg

Platform Size	Operating Height	Capacity
0.75 m x 0.75 m	80 mm - 86 mm	600 kg x 0.2 kg
1 m x 1 m	80 mm - 86 mm	600 kg x 0.2 kg

Maximum Strength 3000 kg

Platform Size	Operating Height	Capacity
1 m x 1 m	80 mm - 86 mm	1500 kg x 0.5 kg 3000 kg x 1.0 kg
1.25 m x 1 m	80 mm - 86 mm	1500 kg x 0.5 kg 3000 kg x 1.0 kg
1.25 m x 1.25 m	80 mm - 86 mm	1500 kg x 0.5 kg 3000 kg x 1.0 kg
1.5 m x 1.25 m	80 mm - 86 mm	1500 kg x 0.5 kg 3000 kg x 1.0 kg
1.5 m x 1.5 m	80 mm - 86 mm	1500 kg x 0.5 kg 3000 kg x 1.0 kg



H507 corner section

© Avery Weigh-Tronix 2004. All rights reserved. This publication is issued to provide outline information only which, unless agreed by Avery Weigh-Tronix in writing, may not be regarded as a representation relating to the products or services concerned. Avery Weigh-Tronix reserves the right to alter without notice the specification, design, price or conditions of supply of any product or service.

Foundry Lane, Smethwick,
West Midlands, England B66 2LP.

Tel: +44 (0)870 90 34343

Fax: +44 (0)121-224 8183

E mail: info@awtxglobal.com

Internet: <http://www.averyweigh-tronix.com>

Avery Weigh-Tronix